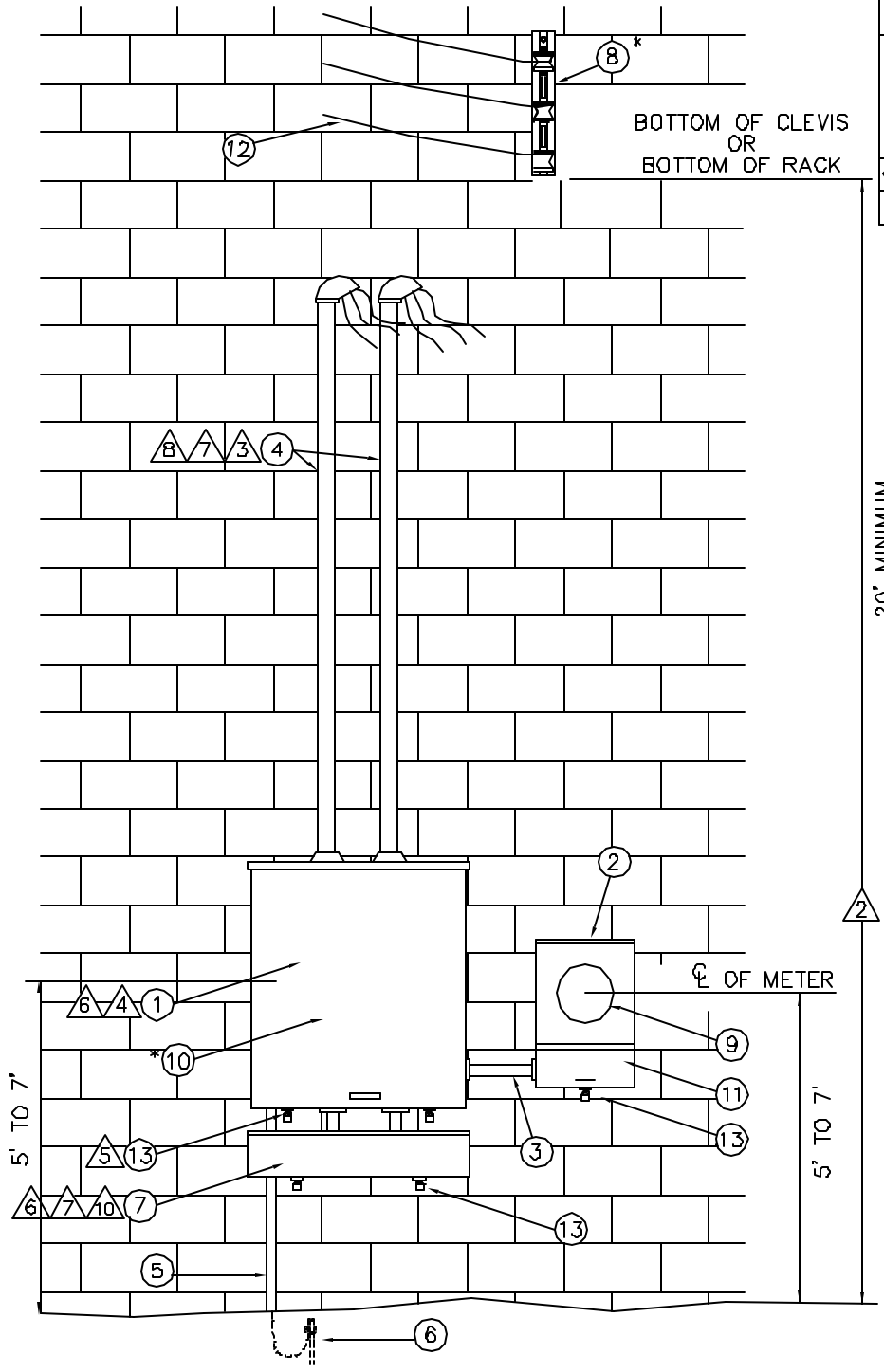


# SO-14-CT

## APPLICATION GUIDE

DESCRIPTION	VOLTAGE	
	OH/US	OH/US
	1 $\phi$ 120/240 V	1 $\phi$ 120/208 V
COMMERCIAL	X	X
RESIDENTIAL	X	



△ GENERAL NOTES

SEE PAGE 2 FOR NOTES

**ELECTRIC SERVICE STANDARD  
CITY UTILITIES OF SPRINGFIELD MO.**

DRAWN BY: G.GUEVARA	SERVICE OVERHEAD 1 $\phi$ C.T. MAXIMUM 1200 AMPS
REV BY: W.BROOKS	
FILE: SO-1-CT1	
APPROVED: 08/21/06	REVISED: 06/01/06
SHEET OF 1 OF 2	
STD. NO. <b>SO-14-CT</b>	

MATERIAL LIST

QTY.	DESCRIPTION	STOCK NO.	QTY.	DESCRIPTION	STOCK NO.
	<b>FURNISHED and INSTALLED BY CUSTOMER</b>			<b>FURNISHED BY CITY UTILITIES</b>	
1.	1 CURRENT TRANSFORMER ENCLOSURE (RAINTIGHT, AND HAVE PROVISION FOR LOCKING) FOR 400 AMP SERVICES THE MINIMUM RECOMMENDED SIZE IS 24" x 24" x 11" FOR 600 OR 800 AMP SERVICES, THE MINIMUM - $\Delta$ RECOMMENDED SIZE IS 36" x 36" x 11" THE C.T. ENCLOSURE SHALL NOT BE SMALLER THAN ALLOWED BY 2005 NEC 314.2B		*8. AS REQD	SECONDARY BRACKET (3 - WIRE) OR 3 - CLEVIS BRACKET 2 - INSULATED SPOOL, BROWN 1 - INSULATED SPOOL, WHITE	102170 130094 130121
2.	1 METER ENCLOSURE, FOR 8 TERMINAL METER (RAINTIGHT, ENCLOSURE MUST HAVE ROOM AND MOUNTING PLATE FOR TEST SWITCH, MINIMUM SIZE 12" WIDE x 18" HIGH x 4" DEEP)		9.	1 8 TERMINAL METER	
3.	AS REQD 1" EMT CONDUIT - $\Delta$		*10.	2 CURRENT TRANSFORMERS	
4.	AS REQD SERVICE ENTRANCE CONDUIT(S) AND - $\Delta$ CONDUCTORS		11.	1 TEST SWITCH.	
5.	AS REQD GROUNDING ELECTRODE CONDUCTOR - $\Delta$		12.	AS REQD SERVICE DROP CONDUCTOR SIZE AND LENGTH AS REQUIRED	
6.	AS REQD GROUNDING ELECTRODE - $\Delta$		13.	AS REQD PADLOCK OR METER SEAL	
7.	1 GUTTER "MAY BE REQUIRED BY INSPECTOR" - $\Delta$ (RAINTIGHT, AND HAVE PROVISION FOR LOCKING) FOR 400 AMP SERVICES THE MINIMUM RECOMMENDED SIZE IS 8" x 8" x LENGTH AS REQUIRED. FOR 600 OR 800 AMP SERVICES THE MINIMUM RECOMMENDED SIZE IS 12" x 12" x LENGTH AS REQUIRED. THE GUTTER SHALL NOT BE SMALLER THAN ALLOWED BY 2005 NEC ARTICLE 366				
				<b>*FURNISHED BY CITY UTILITIES INSTALLED BY CUSTOMER PICK UP AT 626 N. BELCREST</b>	



GENERAL NOTES

1. CUSTOMER TO VERIFY SIZE AND LOCATION OF ALL SERVICE EQUIPMENT WITH CITY UTILITIES AND APPROPRIATE INSPECTION AUTHORITY BEFORE BEGINNING WORK.
2. MINIMUM ATTACHMENT HEIGHT IS 20'.
3. THE SERVICE ENTRANCE CONDUITS MAY EXTEND ABOVE THE ROOF AND SUPPORT THE SERVICE DROP CONDUCTORS. WHEN THIS IS DONE, THE CONDUITS SHALL BE DESIGNED TO SUPPORT THE PULL OF THE SERVICE DROP CONDUCTORS UNDER ALL WEATHER CONDITIONS.
4. THE CUSTOMER SHALL NOT SPLICE ANY SERVICE CONDUCTOR IN THE CURRENT TRANSFORMER ENCLOSURE.
5. THE CURRENT TRANSFORMER ENCLOSURE SHALL NOT BE LOCKED BY THE CUSTOMER.
6. MINIMUM ENCLOSURE HEIGHT IS 5' AND MAXIMUM ENCLOSURE HEIGHT IS 7'.
7. WHEN SERVICE ENTRANCE CONDUCTORS ARE INSTALLED AS PARALLEL RUNS, ALL CONNECTIONS SHALL BE IN ACCORDANCE WITH 2005 NEC ARTICLE 310.4.
8. YOU MUST RECEIVE PRIOR APPROVAL FROM CITY UTILITIES IF YOUR SERVICE REQUIRES MORE THAN 3 SERVICE ENTRANCE CONDUITS.
9. USE INSULATED TAP BARS FOR ALL CONNECTIONS IN GUTTER, EACH BAR SHALL HAVE AT LEAST ONE OPEN TERMINAL.
10. 1200 AMPS MAXIMUM SIZE WITHOUT PRIOR APPROVAL FROM CITY UTILITIES.
11. CHECK WITH LOCAL INSPECTION AUTHORITY TO VERIFY REQUIREMENTS FOR GROUNDING ELECTRODE CONDUCTOR SIZE AND TYPE OF GROUNDING ELECTRODE TO BE USED. ALL GROUNDING TO MEET 2005 NEC ARTICLE 250.
12. METER SOCKET BONDING AS REQUIRED BY 2005 NEC ARTICLE 250(C).
13. IF CTs ARE REQUIRED FOR A SERVICE, THE CUSTOMER SHALL FURNISH AND INSTALL A CONDUIT NO LESS THAN 1" IN DIAMETER BETWEEN THE METER SOCKET AND THE CT LOCATION FOR THE EXCLUSIVE USE OF CITY UTILITIES. LB TYPE CONNECTORS "ELBOWS WITH REMOVABLE COVERS" SHALL NOT BE ALLOWED. THE MAXIMUM TOTAL LENGTH OF THIS CONDUIT SHALL BE NO GREATER THAN 40', WITH NO MORE THAN THREE 90° BENDS IN A SINGLE PULL SECTION, UNLESS APPROVED BY THE POWER QUALITY SECTION.

**ELECTRIC SERVICE STANDARD  
CITY UTILITIES OF SPRINGFIELD MO.**

DRAWN BY: G.GUEVARA	SERVICE OVERHEAD 1 $\phi$ C.T. MAXIMUM 1200 AMPS		
REV BY: W.BROOKS			
FILE: SO-1-CT2			
APPROVED: 08/21/06	REVISED: 06/01/06	SHEET OF 2 2	STD. NO. <b>SO-11-CT</b>