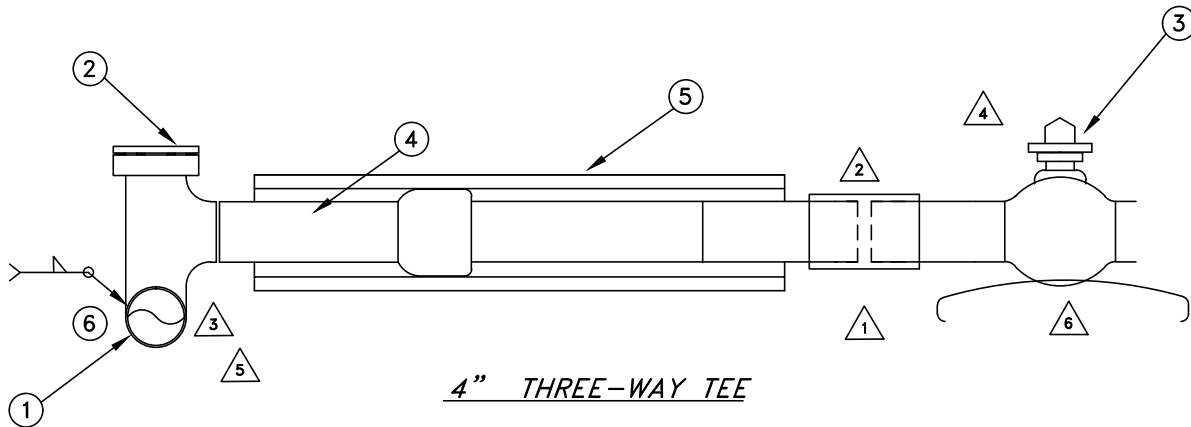


2" THREE-WAY TEE



4" THREE-WAY TEE

### MATERIAL LIST

QTY	DESCRIPTION	STOCK NO.	QTY	DESCRIPTION	STOCK NO.
1	STEEL GAS MAIN		4	TRANSITION FITTING	
2	THREE WAY TEE SIZE: 2" 4"	205322 205334	1	2" 4"	203145 203155
3	POLYETHYLENE VALVE 2" 4"	204466 204485	5	PROTECTIVE SLEEVE (INCLUDED IN TRANSITION PACK)	
			6	17 LB ANODE	202015

### GENERAL NOTES

- 4" MAY USE EITHER BUTT FUSION OR COUPLINGS.
- 2" IS TO USE COUPLINGS ONLY, 6" IS TO USE ELECTROFUSION COUPLINGS ONLY, PROTECTIVE SLEEVE MAY BE TRIMMED AS NECESSARY.
- IF CONNECTING TO STEEL WELD VALVE SHOULD BE USED. OMIT TRANSITION FITTING.
- RUN TRACER WIRE INSIDE VALVE BOX; TAPE NEAR THE TOP.
- APPLY GLASS MESH AND MASTIC. ALLOW MASTIC TO DRY FULLY BEFORE BACKFILLING.
- UNDER VALVE USE SAND BAGS OR WOOD BLOCKING.

CONSTRUCTION STANDARD  
CITY UTILITIES  
OF SPRINGFIELD, MISSOURI

SIDE TAP OFF  
OF STEEL MAIN  
USING 3-WAY TEE  
PLASTIC VALVE

LATEST REV. DATE 05/21/2001 STANDARD NO. GS-118 PAGE: