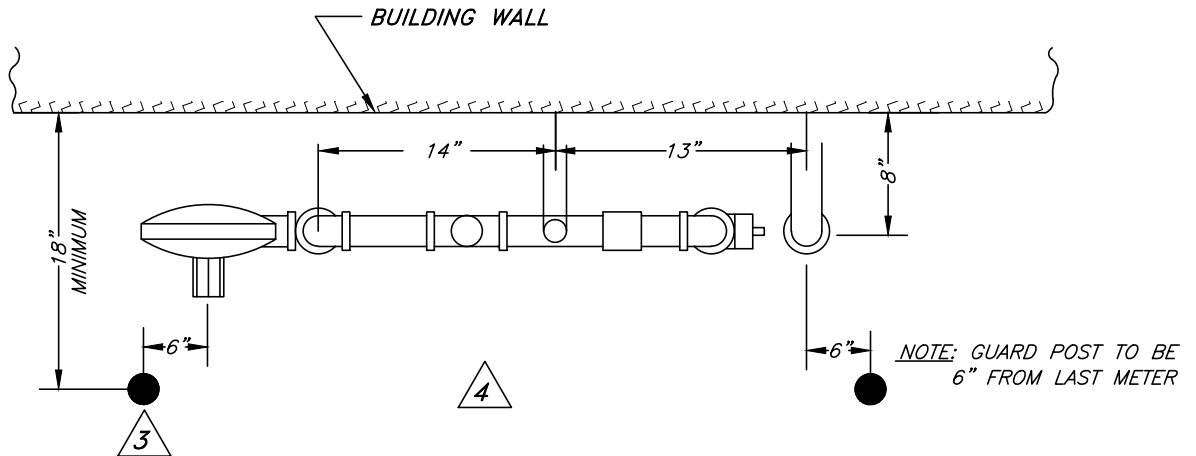


COMMERICAL METER SET
PLAN VIEW



NOTE:
INSTALL BARRICADES IN ANY LOCATIONS WHERE
THE GAS METER SETTING OR REGULATOR STATION IS
IN DANGER OF BEING DAMAGED BY VEHICLES OR OTHER MEANS.



RESIDENTIAL METER SET
PLAN VIEW



GENERAL NOTES

1. 4" CONCRETE FILLED STEEL POST AS SHOWN IN GS-505.
2. MAXIMUM POST SPACING SHALL BE 48". POST SHALL BE SPACED EVENLY. FOR METER SETTINGS GREATER THAN 96" IN LENGTH INSTALL 4 POST SPACED EVENLY.
3. 2" CONCRETE FILLED STEEL POST TYPICAL OF GS-505.
4. SPACING SHALL BE 36" FOR SINGLE METER SETS AND 48" FOR DUAL METER SETS.
5. CONSULT SUPERVISOR TO DETERMINE NEED FOR BARRICADES AT METER SETTING.
6. SEE GS-505 FOR FARM TAP OR GAS METERS AT THE STREET, OR METER SETS IN PARKING LOTS BARRICADES.

**CONSTRUCTION STANDARD
CITY UTILITIES
OF SPRINGFIELD, MISSOURI**

**TYPICAL METER
SET BARRICADES**

LATEST REV. DATE 1/8/98	STANDARD NO. GS-507	PAGE:
----------------------------	------------------------	-----------