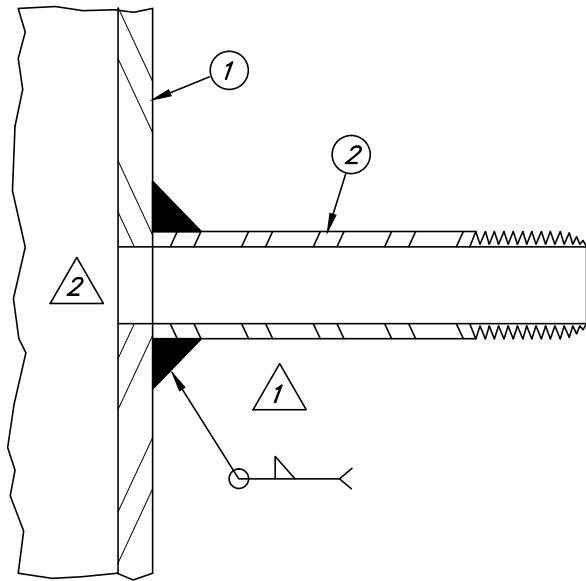


DETAIL OF GAUGE TAP



SECTION THROUGH
1/4" NIPPLE

MATERIAL LIST

QTY	DESCRIPTION	STOCK NO.	QTY	DESCRIPTION	STOCK NO.
1	STEEL GAS PIPE				
2	1/4" X 6" THREADED NIPPLE <i>NOTE: NIPPLE IS TYPICALLY CUT IN HALF, AND OTHER HALF USED FOR ANOTHER GAUGE TAP.</i>	206364			
3	1/4" NEEDLE VALVE	204440			
4	1/4" PLUG	206456			



GENERAL NOTES

- TRIM ONE END OF NIPPLE TO REMOVE THREADS PRIOR TO WELDING.
- CUT FULL OPEN HOLE PRIOR TO WELDING

CONSTRUCTION STANDARD
CITY UTILITIES
OF SPRINGFIELD, MISSOURI

TYPICAL GAUGE TAP