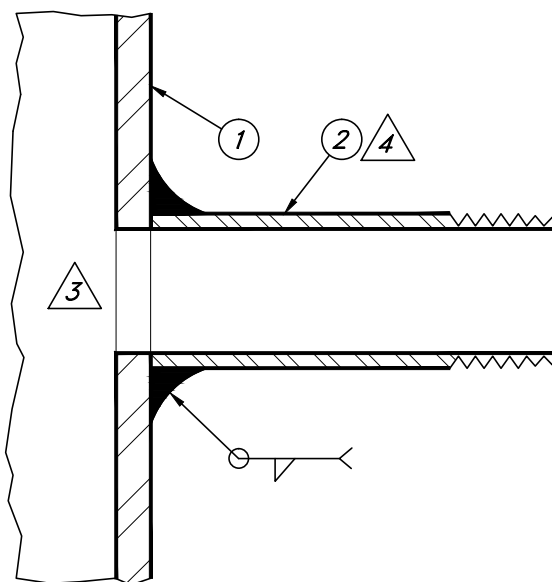


VALVE TAP DETAIL



SECTION THROUGH
3/4" NIPPLE

MATERIAL LIST

QTY	DESCRIPTION	STOCK NO.	QTY	DESCRIPTION	STOCK NO.
1	STEEL GAS PIPE (BASE PIPE)				
2	1 BLACK NIPPLE (TYPICAL) 3/4" x 4" - SEE NOTE 1 (OPTIONAL) 3/4" x 6" - SEE NOTE 2	206392 206394			
3	1 3/4" THREADED METER COCK	204065			
4	1 3/4" BLACK PLUG	206462			

GENERAL NOTES

- 1 TRIM ONE END OF NIPPLE TO REMOVE THREADS PRIOR TO WELDING.
- 2 NIPPLE IS TYPICALLY CUT IN HALF, AND OTHER HALF USED FOR ANOTHER TAP.
- 3 CUT FULL OPEN HOLE PRIOR TO WELDING.
- 4 CONTOUR PLAIN END OF NIPPLE AS NEEDED TO FIT THE BASE PIPE PRIOR TO WELDING.

CONSTRUCTION STANDARD
CITY UTILITIES OF
SPRINGFIELD, MISSOURI

METER SET BYPASS
3/4" VALVE TAP