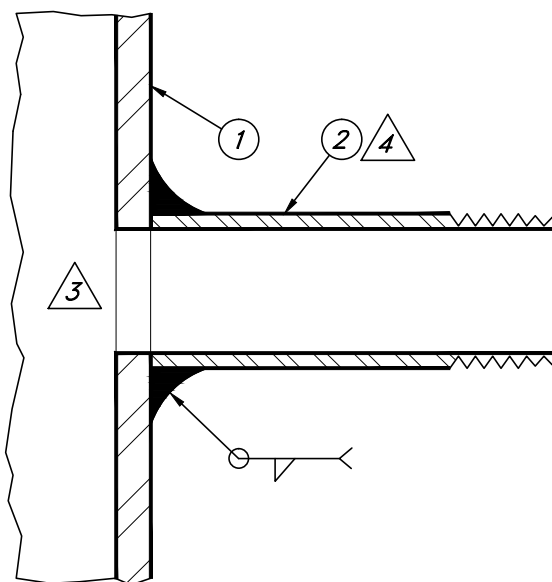


VALVE TAP DETAIL



SECTION THROUGH
1" NIPPLE

MATERIAL LIST

| QTY | DESCRIPTION | STOCK NO. | QTY | DESCRIPTION | STOCK NO. |
|-----|---|------------------|-----|-------------|-----------|
| 1 | STEEL GAS PIPE | | | | |
| 2 | 1 BLACK NIPPLE (TYPICAL) 1" x 4" - SEE NOTE 1 (OPTIONAL) 1" x 6" - SEE NOTE 2 | 206404 206406 | | | |
| 3 | 1 1" THREADED METER COCK VALVE | 204070 | | | |
| 4 | 1 1" BLACK PLUG | 206464 | | | |

GENERAL NOTES

- 1 TRIM ONE END OF NIPPLE TO REMOVE THREADS PRIOR TO WELDING.
- 2 NIPPLE IS TYPICALLY CUT IN HALF, AND OTHER HALF USED FOR ANOTHER TAP.
- 3 CUT FULL OPEN HOLE PRIOR TO WELDING.
- 4 CONTOUR PLAIN END OF NIPPLE AS NEEDED TO FIT THE BASE PIPE PRIOR TO WELDING.

CONSTRUCTION STANDARD
CITY UTILITIES OF
SPRINGFIELD, MISSOURI

METER SET BYPASS
1" VALVE TAP