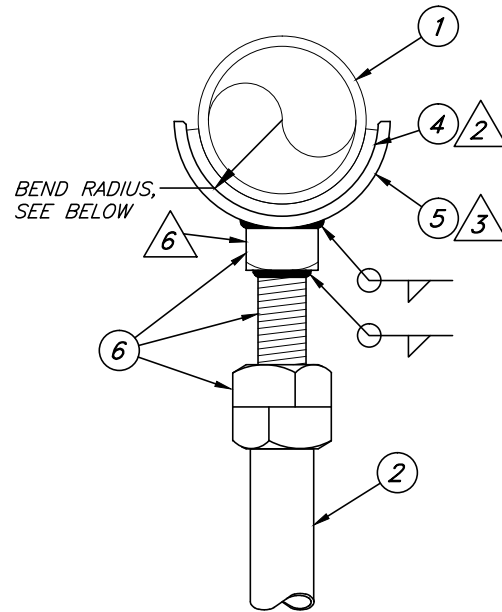


ELEVATION VIEW



END VIEW AND  
SADDLE FABRICATION

FOR 3" PIPE, BEND RADIUS = 2.0"  
FOR 4" PIPE, BEND RADIUS = 2.5"

### MATERIAL LIST

QTY	DESCRIPTION	STOCK NO.	QTY	DESCRIPTION	STOCK NO.
1	PIPE OR HEADER TO BE SUPPORTED		6	1"x16" BOLT (MAKES 2 SUPPORTS)	102138
2 AS REQD	1" SCH. 40 SUPPORT PIPE	201004	1	1" LOCKNUT	102221
3	BASE PLATE, STEEL, 9"x9"x1/4" (MINIMUM), CUT TO SIZE	796020	1	1" SQUARE NUT	102298
4 AS REQD	1/4" RUBBER SHEET, CUT TO FIT	202250			
5	"HEAT FORMED" SADDLE FROM FLAT STOCK: FOR 3" PIPE, 2"x1/4" x 6-5/8" LONG FOR 4" PIPE, 2"x1/4" x 8" LONG	796604 FAB. FAB.			

### GENERAL NOTES

- 1 MAINTAIN CLEARANCE BETWEEN THE BRACKET AND WELDS.
- 2 LAYER RUBBER SHEETING BETWEEN THE PIPE AND THE SADDLE SUPPORT.
- 3 REMOVE ANY SHARP EDGES.
- 4 OBTAIN THIS MATERIAL AT STOREROOM #1 (825 N. BELCREST).
- 5 WELD SQUARE NUT WITH FLAT-END UP AND THE NUT FLATS SQUARE TO THE PIPE CENTERLINE.
- 6 CUT PIPE TO NEEDED LENGTH, LEAVING APPROXIMATELY 1" OF EXPOSED THREADS.

CONSTRUCTION STANDARD  
CITY UTILITIES OF  
SPRINGFIELD, MISSOURI

FABRICATED PIPE SUPPORT  
FOR 3" & 4" PIPE

LATEST REV. DATE 05/03/2007 STANDARD NO. GS-520B PAGE: