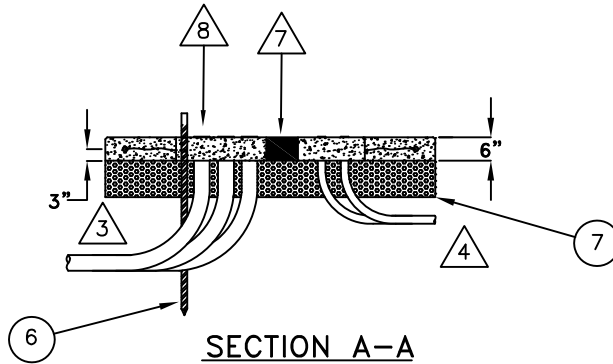
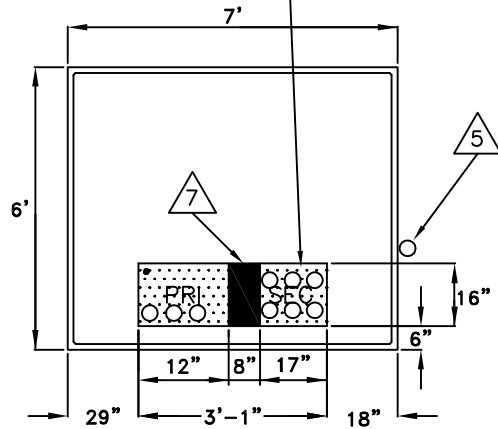


NOTE: ALL SECONDARY ELLS TO BE INSTALLED WITHIN AREA DESIGNATED AS "SEC" ON THIS PAD DRAWING.



RELATED STANDARDS
UX-*B
UX-*C

MATERIAL LIST

| QTY. | DESCRIPTION | STOCK NO. | QTY. | DESCRIPTION | STOCK NO. |
|------|----------------------------------|-----------|------|---|-----------|
| 1 | 6 X 6 X #10 MESH (5'-6" X 6'-6") | NONE | 5 | CONCRETE, SMALL AGGREGATE, 3000# PSI, APPROX 3/4 CU. YARD | NONE |
| 2 | RE-BAR, 3/8" DIA x 6'-6" LONG | NONE | 6 | 5/8" x 8' COPPER WELD GROUND ROD | 102341 |
| 3 | RE-BAR, 3/8" DIA x 5'-6" LONG | NONE | 7 | DIRTY BASE 1" OR SMALLER STONE (APP. 1/3 CY) | NONE |
| 4 | TIE WIRE | NONE | | | |

GENERAL NOTES

- DO NOT POUR PAD WITHOUT CONDUIT WINDOW.
- TIE RE-BAR AT CORNERS OF PAD.
- CUSTOMER TO FURNISH AND INSTALL CONDUIT, AND GALV ELLS FOR CU PRI CONDUCTORS THAT RUN FROM THIS TRANSFORMER TO THE MAIN POWER SOURCE. NUMBER AND SIZE OF ELLS TO BE SHOWN ON CU CONSTRUCTION DRAWINGS.
- CUSTOMER TO FURNISH AND INSTALL ALL SEC ELLS AND CONDUIT. NUMBER AND SIZE OF ELLS TO BE SHOWN ON CU CONSTRUCTION DWGS. CONTACT CU PROJECT ENGINEER OR CONTRACT INSPECTOR TO COORDINATE INSTALLATION OF CUSTOMER FURNISHED EQUIP.
- CUSTOMER MAY BE REQD TO FURNISH AND INSTALL 1-1" PVC SCH-40 CONDUIT FOR REMOTE METER READING. CONDUIT IS TO BE STUBBED-UP ON THE SEC SIDE OF THE TRANSFORMER PAD AND RUN TO A LOCATION INSIDE THE BUILDING WHERE CONNECTION TO A CUSTOMER PROVIDED PHONE LINE IS AVAILABLE. CONTACT CITY UTILITIES POWER QUALITY DEPARTMENT FOR COMPLETE DETAILS.
- CONTACT CU PROJECT ENGINEER OR CONTRACT INSPECTOR TO INSPECT AND APPROVE PAD BEFORE POURING CONCRETE.
- NO CONDUIT IS TO BE INSTALLED IN THIS 8" WIDE AREA.
- INSTALL TOP OF CONDUIT FLUSH WITH TOP OF PAD.

ELECTRIC CONSTRUCTION STANDARD
CITY UTILITIES OF SPRINGFIELD MO.

| | | | |
|-----------------------|--|-----------------------|---------------------------|
| DRAWN BY: WINN | CONCRETE PAD FOR 3+ TRANSFORMER 75, 150, 225, 300 + 500 KVA | | |
| REV BY: SRSM | | | |
| FILE: PD-TR1 | | | |
| APPROVED: 12/01/08 | REVISED: 2/26/09 | SHEET OF 1 OF 1 | STD. NO. PD-TR1 |