



City Utilities of Springfield

Utility Plan Submittal* Guide Sheet

Site Utility Plan Should Include:

- Current boundary information and easements of record
- Location of all buildings, firewalls, and service equipment
- Location of existing CU electric, gas, and water facilities
- Location of existing private electric, gas, and water facilities
- Location of existing electric, gas, and water meters
- Location of other existing or future utilities, structures, and improvements over or near CU facilities
 - For electric, show a suggested one-line connection to existing or proposed CU facilities (e.g. utility poles, junction cabinets, etc.) CU will determine if the proposed connection to existing facilities is feasible and acceptable.
- Flowline elevations for existing and future sanitary sewer or drainage facilities
- Grading elevations over CU underground electric, gas, and water lines
- Electric, gas, and water mains needing to be relocated or lowered
- Location of proposed above-grade utility infrastructure

Gas Specific Needs:

- Show proposed gas meter location
 - If existing gas service will be used, mark "Use in Place"
- Show the location where the customer gas pipe enters the building (Direct, Up to roof)
- State the requested gas delivery pressure (Standard Delivery = 7" WC (0.25 psi))
 - If above Standard Delivery, state the "Maximum Design Operating Pressure" (a.k.a. "Max. Allowable Operating Pressure," "MAOP") of the portion of the customer's gas system that will be at the elevated delivery pressure.
- Show a load table with total (existing & new) load

Water Specific Needs:

- Domestic - Include a fixture demand table with total (existing & new) domestic demand
- Fire - If required, include service size and backflow prevention information, if available
- Irrigation - If required, specify meter size and demand (gpm)
 - NOTE: CU & the City of Springfield allow irrigation systems to be served from the domestic service with a private deduct meter.

Electric Specific Needs (Refer to CU Electric Service Standards for accepted electrical requirements/configurations):

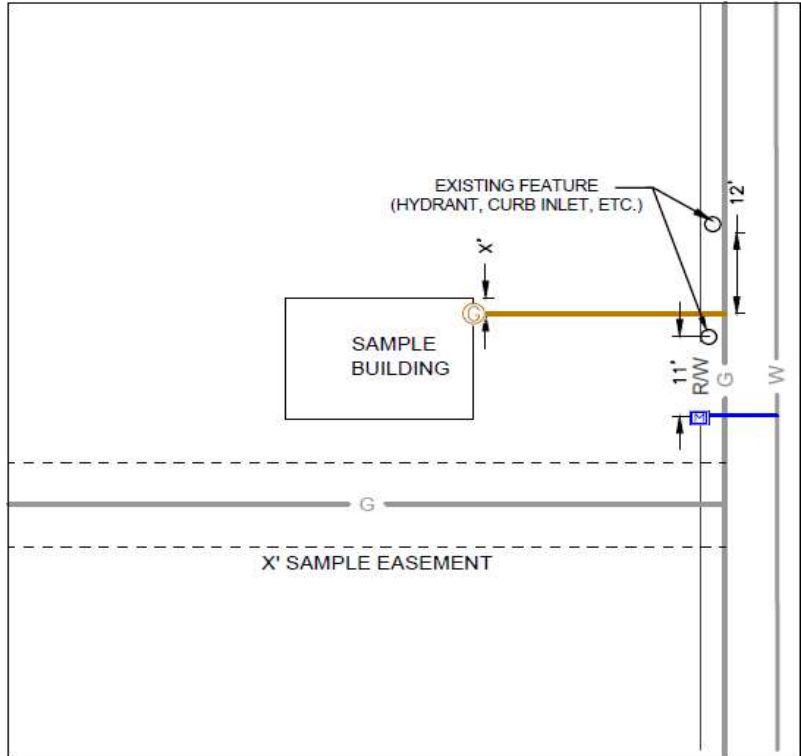
- For each service, identify the following;
 - Main OCP (Over-current protective device/disconnect) and ampacity
 - Conduit, gutter, and wire size and type (e.g. copper, aluminum)
 - Existing service configuration where applicable (existing meters, service disconnect ampacity, gutters, etc.)
- For each meter, identify the following;
 - The proposed address, Voltage Class, and OCP device
 - Proposed meter location (e.g. transformer, building, etc.)
- Load calculation
 - Total Connected and Total Demand

**This form is intended to be an aid in preparing site utility plans and does not replace or supersede the plan review process conducted by City Utilities of Springfield or any other reviewing agency. Any questions regarding this form should be directed to Developer Services @ 417-831-8888.*

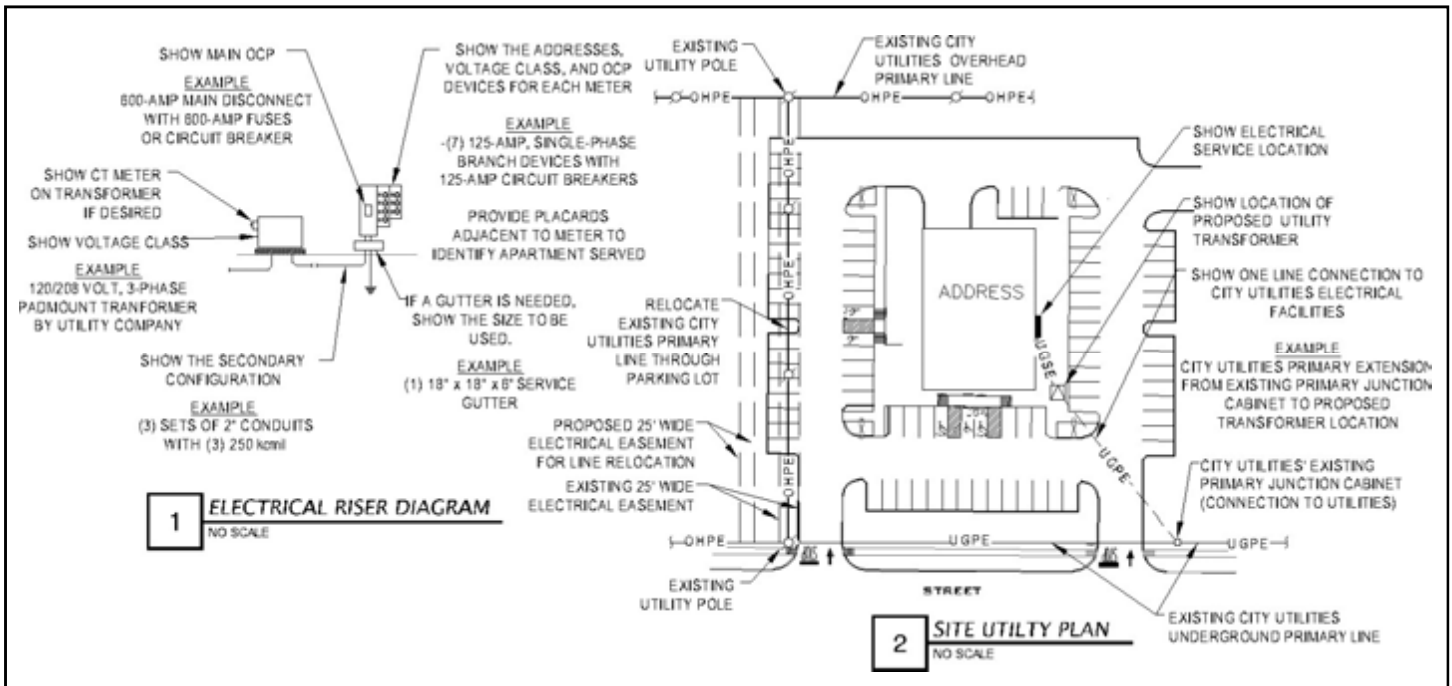
Examples Gas & Water

WATER LOAD TABLE (SAMPLE)			
FIXTURE	QUANTITY	SFU (EACH)	SFU (TOTAL)
DISHWASHER	1	3	3
FOUNTAIN	2	4	8
URINAL	3	5	15
TOTAL (SFU)			26
DESIGN GPM			9.5
CU SERVICE SIZE			1"
METER SIZE			5/8"

GAS LOAD TABLE (SAMPLE)	
APPLIANCE	INPUT CFH (MBH)
GENERATOR	923
RTU	540
FUTURE OVEN	120
TOTAL CONNECTED LOAD	1583
DELIVERY PRESSURE	2 PSI
CUSTOMER MAXIMUM DESIGN PRESSURE	5 PSI



Electric



Scan the QR code below to visit CU's Construction Standards Page

