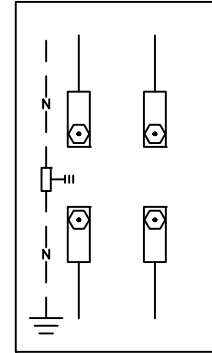
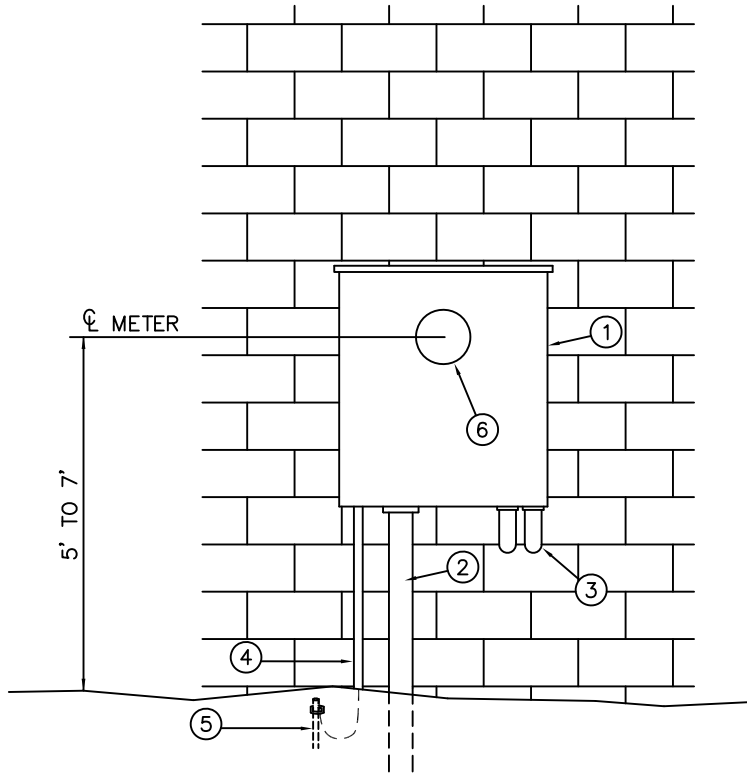


# SU-1-400

## APPLICATION GUIDE

DESCRIPTION	VOLTAGE
	OH/UG 1 $\phi$ 120/240 V
COMMERCIAL	X
RESIDENTIAL	X



**4-TERMINAL METER BASE**  
 "BOLT-IN METER"  
 120/240 VOLTS, 3 WIRE  
 SINGLE PHASE ONLY  
 201-400 AMPS  
 (FORM 2K METER)

## MATERIAL LIST

QTY.	DESCRIPTION	STOCK NO.	QTY.	DESCRIPTION	STOCK NO.
<b>FURNISHED AND INSTALLED BY CUSTOMER</b>			<b>FURNISHED BY CITY UTILITIES</b>		
1.	1	METER ENCLOSURE (RAINTIGHT) (FOR BOLT-IN 4-TERMINAL METER)	6.	1	4-TERMINAL BOLT-IN METER
2.	AS REQD	SERVICE LATERAL CONDUIT(S) AND $\Delta$ CONDUCTORS			
3.	AS REQD	LOAD SIDE CONDUIT(S) AND CONDUCTORS TO CUSTOMER'S DISCONNECT SWITCH			
4.	AS REQD	GROUNDING ELECTRODE CONDUCTOR - $\Delta$			
5.	AS REQD	GROUNDING ELECTRODE - $\Delta$			
				• FURNISHED BY CITY UTILITIES INSTALLED BY CUSTOMER PICK UP AT 825 N. BELCREST	



### GENERAL NOTES

- CUSTOMER TO VERIFY SIZE AND LOCATION OF ALL SERVICE EQUIPMENT WITH CITY UTILITIES AND APPROPRIATE INSPECTION AUTHORITIES BEFORE BEGINNING WORK.
- IF USING 400 AMP 120/208 VOLT SINGLE PHASE YOU MUST USE A C.T. TYPE SERVICE.
- CHECK WITH LOCAL INSPECTION AUTHORITY TO VERIFY REQUIREMENTS FOR GROUNDING ELECTRODE CONDUCTOR SIZE AND TYPE OF GROUNDING ELECTRODE TO BE USED. ALL GROUNDING TO MEET 2017 NEC ARTICLE 250.

### ELECTRIC SERVICE STANDARD CITY UTILITIES OF SPRINGFIELD MO.

DRAWN BY: A.C.	SERVICE UNDERGROUND 1 $\phi$ 400 AMP SELF CONTAINED
REV BY: K.DENTON	
FILE: SU-1-400	
APPROVED: 10/29/14	REVISED: 03/19/18
	SHEET OF 1 OF 1
	STD. NO. SU-1-400