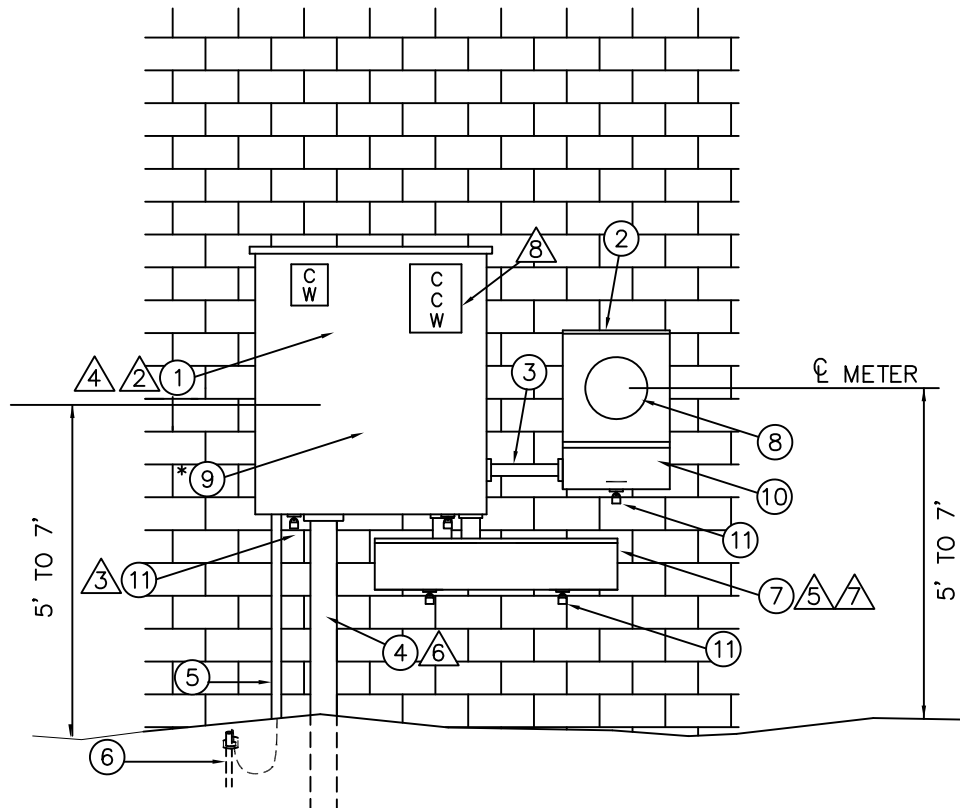


SU-3-CT

APPLICATION GUIDE

DESCRIPTION	VOLTAGE		
	UG	OH/UG	OH
	1 ϕ /3 ϕ 277/480 V	1 ϕ /3 ϕ 120/208 V	1 ϕ /3 ϕ 120/240 V
COMMERCIAL	X	X	X



△	GENERAL NOTES	ELECTRIC SERVICE STANDARD CITY UTILITIES OF SPRINGFIELD MO.		
1.	REGARDLESS OF MOUNTING STRUCTURE, REQUIRED HEIGHT MUST BE MAINTAINED. SEE PAGE 2 FOR ADDITIONAL NOTES	DRAWN BY: G.GUEVARA		SERVICE UNDERGROUND COMBINATION 1 ϕ /3 ϕ C.T. SERVICE
		REV BY: K.DENTON		
		FILE: SU-3-CT1		
		APPROVED: 10/29/14	REVISED: 03/19/18	SHEET OF 1 OF 2

MATERIAL LIST

QTY.	DESCRIPTION	STOCK NO.	QTY.	DESCRIPTION	STOCK NO.
	FURNISHED and INSTALLED BY CUSTOMER			FURNISHED BY CITY UTILITIES	
1.	1 CURRENT TRANSFORMER ENCLOSURE (RAINTIGHT, AND HAVE PROVISION FOR LOCKING WITH A CITY UTILITIES PADLOCK) - Δ FOR 400 AMP SERVICES THE MINIMUM RECOMMENDED SIZE IS 24" x 24" x 12". FOR 600 OR 800 AMP SERVICES THE MINIMUM RECOMMENDED SIZE IS 36" x 36" x 12". THE C.T. ENCLOSURE SHALL NOT BE SMALLER THAN ALLOWED BY 2017 NEC 314.28		8.	1 13 TERMINAL METER	
2.	1 METER ENCLOSURE, FOR 13 TERMINAL METER (RAINTIGHT, ENCLOSURE MUST HAVE ROOM AND MOUNTING PLATE FOR TEST SWITCH, MINIMUM SIZE 12" WIDE x 18" HIGH x 4" DEEP)		*9.	3 CURRENT TRANSFORMERS	
3.	AS REQD 1" EMT CONDUIT - Δ		10.	1 TEST SWITCH.	
4.	AS REQD SERVICE LATERAL CONDUIT(S) AND Δ CONDUCTORS		11.	AS REQD PADLOCK OR METER SEAL	
5.	AS REQD GROUNDING ELECTRODE CONDUCTOR - Δ				
6.	AS REQD GROUNDING ELECTRODE - Δ				
7.	1 GUTTER MAY BE REQUIRED BY INSPECTOR - Δ (RAINTIGHT, AND HAVE PROVISION FOR LOCKING) FOR 400 AMP SERVICES THE MINIMUM RECOMMENDED SIZE IS 8" x 8" x LENGTH AS REQUIRED. FOR 600 OR 800 AMP SERVICES THE MINIMUM RECOMMENDED SIZE IS 12" x 12" x LENGTH AS REQUIRED. THE GUTTER SHALL NOT BE SMALLER THAN ALLOWED BY 2017 NEC ARTICLE 366				
				*FURNISHED BY CITY UTILITIES INSTALLED BY CUSTOMER PICK UP AT 825 N. BELCREST	

Δ **GENERAL NOTES**

- CUSTOMER TO VERIFY SIZE AND LOCATION OF ALL SERVICE EQUIPMENT WITH CITY UTILITIES AND APPROPRIATE INSPECTION AUTHORITY BEFORE BEGINNING WORK.
- THE CUSTOMER SHALL NOT SPLICE ANY SERVICE CONDUCTOR IN THE CURRENT TRANSFORMER ENCLOSURE.
- THE CURRENT TRANSFORMER ENCLOSURE SHALL NOT BE LOCKED BY THE CUSTOMER.
- CONTACT CITY UTILITIES FOR QUESTIONS ON METERING OR METERING EQUIPMENT.
- WHEN SERVICE ENTRANCE CONDUCTORS ARE INSTALLED AS PARALLEL RUNS, ALL CONNECTIONS SHALL BE IN ACCORDANCE WITH 2017 NEC ARTICLE 310.4.
- YOU MUST RECEIVE PRIOR APPROVAL FROM CITY UTILITIES IF YOUR SERVICE REQUIRES MORE THAN 3 SERVICE LATERAL CONDUITS.
- USE INSULATED TAP BARS FOR ALL CONNECTIONS IN GUTTER, EACH BAR SHALL HAVE AT LEAST ONE OPEN TERMINAL.
- CHECK AND TAG SERVICE TO INDICATE CLOCKWISE (CW) OR COUNTER CLOCKWISE (CCW) ROTATION AT THE C.T. ENCLOSURE.
- 1200 AMPS MAXIMUM SIZE WITHOUT PRIOR APPROVAL FROM CITY UTILITIES.
- SEE SU-GN3 FOR PANEL CONNECTION DETAIL WHEN INSTALLING A 120/240 VOLT 4-WIRE COMBINATION SERVICE.
- CHECK WITH LOCAL INSPECTION AUTHORITY TO VERIFY REQUIREMENTS FOR GROUNDING ELECTRODE CONDUCTOR SIZE AND TYPE OF GROUNDING ELECTRODE TO BE USED. ALL GROUNDING TO MEET 2017 NEC ARTICLE 250.
- IF CTs ARE REQUIRED FOR A SERVICE, THE CUSTOMER SHALL FURNISH AND INSTALL A CONDUIT NO LESS THAN 1" IN DIAMETER BETWEEN THE METER SOCKET AND THE CT LOCATION FOR THE EXCLUSIVE USE OF CITY UTILITIES. LB TYPE CONNECTORS "ELBOWS WITH REMOVABLE COVERS" SHALL NOT BE ALLOWED. THE MAXIMUM TOTAL LENGTH IS 40', WITH NO MORE THAN THREE 90' BENDS, UNLESS APPROVED BY THE ELECTRIC METERING SECTION.
- METER SOCKET BONDING AS REQUIRED BY 2017 NEC ARTICLE 250(c).

ELECTRIC SERVICE STANDARD CITY UTILITIES OF SPRINGFIELD MO.			
DRAWN BY: G.GUEVARA		SERVICE UNDERGROUND COMBINATION 1 ϕ /3 ϕ C.T. SERVICE	
REV BY: K.DENTON			
FILE: SU-3-CT2			
APPROVED: 10/29/14	REVISED: 03/19/18	SHEET OF 2 OF 2	STD. NO. SU-31-CT