

ALTERNATE INSTALLATION

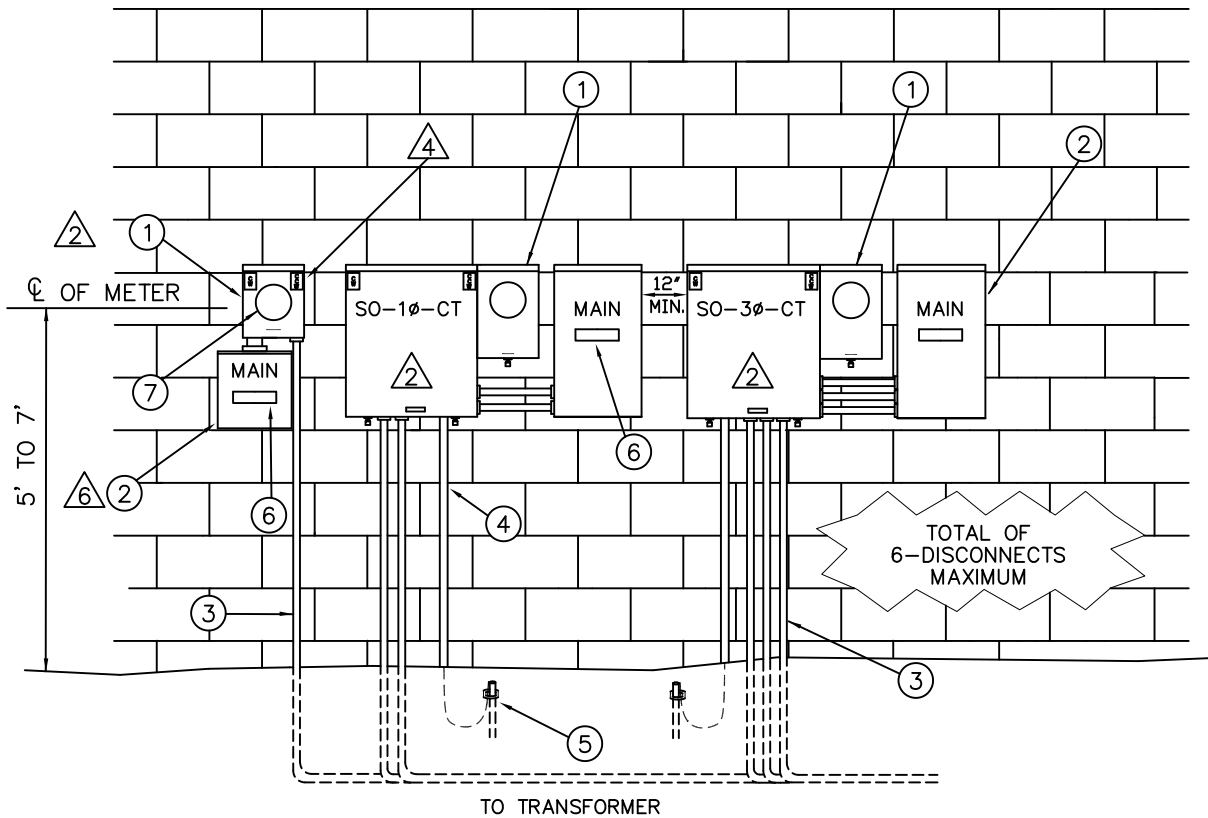
APPLICATION GUIDE				
DESCRIPTION	VOLTAGE			
	OH/UG 1 ϕ 120/240 V	OH/UG 1 ϕ 120/208 V	OH/UG 1 ϕ /3 ϕ 120/208 V	OH 1 ϕ /3 ϕ 120/240 V
COMMERCIAL	X	X	X	X
STRIP CENTER	X	X	X	X
APARTMENTS	X	X		



NOTE

THIS SERVICE IS INTENDED TO BE USED IN SITUATIONS WHERE FUTURE LOAD EXPANSIONS ARE NOT PLANNED.

INCREASING THE SIZE OR NUMBER OF FUTURE SERVICE CONDUCTORS WILL REQUIRE THAT ALL SERVICES ON THAT BUILDING BE OUT OF SERVICE DURING THE CHANGE OVER.



△	GENERAL NOTES		ELECTRICAL SERVICE STANDARD CITY UTILITIES OF SPRINGFIELD MO.			
	SEE PAGE 2 FOR NOTES	DRAWN BY: G.GUEVARA		SERVICE UNDERGROUND NON-GUTTER SERVICE 6-METERS MAXIMUM		
REV BY: W.BROOKS						
FILE: SU-M61						
APPROVED: 08/07/07		REVISED: 11/25/02	SHEET 1 OF 2	STD. NO. SU-M 6		

MATERIAL LIST

QTY.	DESCRIPTION	STOCK NO.	QTY.	DESCRIPTION	STOCK NO.
FURNISHED and INSTALLED BY CUSTOMER			FURNISHED BY CITY UTILITIES		
1.	AS REQD METER ENCLOSURE, (RAINTIGHT) 4 TERMINAL SOCKET FOR 1Ø 120/240 V 5 TERMINAL SOCKET FOR 1Ø 120/208 V 7 TERMINAL SOCKET FOR 1Ø/3Ø 120/240 V 7 TERMINAL SOCKET FOR 1Ø/3Ø 120/208 V		7.	AS REQD 4 TERMINAL METER FOR 1Ø 120/240 V 5 TERMINAL METER FOR 1Ø 120/208 V 7 TERMINAL METER FOR 1Ø/3Ø 120/240 V 7 TERMINAL METER FOR 1Ø/3Ø 120/208 V	
2.	AS REQD SERVICE DISCONNECT (RAINTIGHT) - Δ Δ				
3.	AS REQD SERVICE LATERAL CONDUIT(S) AND CONDUCTORS - Δ				
4.	AS REQD GROUNDING ELECTRODE CONDUCTOR - Δ				
5.	AS REQD GROUNDING ELECTRODE - Δ				
6.	AS REQD SERVICE ADDRESS TAG (PERMANENTLY ATTACHED, MINIMUM 3/8" LETTER HEIGHT)				



GENERAL NOTES

- CUSTOMER TO VERIFY SIZE AND LOCATION OF ALL SERVICE EQUIPMENT WITH CITY UTILITIES AND APPROPRIATE INSPECTION AUTHORITY BEFORE BEGINNING WORK.
- SEVERAL TYPES OF SERVICES MAY BE INSTALLED FOR THIS STANDARD. THIS SERVICE IS LIMITED TO 6-DISCONNECTS TOTAL. ANY OF THE SERVICE TYPES DETAILED IN C.U.'S SERVICE STANDARDS MAY BE USED FOR SERVICE INSTALLATIONS.
- WHEN SERVICE ENTRANCE CONDUCTORS ARE INSTALLED AS PARALLEL RUNS, ALL CONNECTIONS SHALL BE IN ACCORDANCE WITH 2017 NEC ARTICLE 310.4.
- FOR 3Ø SERVICE CHECK AND TAG SERVICE TO INDICATE CLOCKWISE (CW) OR COUNTER CLOCKWISE (CCW) ROTATION AT EACH METER.
- FOR COMMERCIAL AND STRIP CENTER INSTALLATIONS, 200 AMP IS THE MINIMUM RECOMMENDED SIZE FOR INDIVIDUAL SERVICE DISCONNECTS.
- SEE SU-GN3 FOR PANEL CONNECTION DETAIL WHEN INSTALLING A 120/240 VOLT 4-WIRE COMBINATION SERVICE.
- CHECK WITH LOCAL INSPECTION AUTHORITY TO VERIFY REQUIREMENTS FOR GROUNDING ELECTRODE CONDUCTOR SIZE AND TYPE OF GROUNDING ELECTRODE TO BE USED. ALL GROUNDING TO MEET 2017 NEC ARTICLE 250.

**ELECTRICAL SERVICE STANDARD
CITY UTILITIES OF SPRINGFIELD MO.**

DRAWN BY:
G.GUEVARA

REV BY:
K.DENTON

FILE:
SU-M62

APPROVED:
10/29/14

REVISED:
03/30/18

SHEET
2 OF 2

STD. NO.
S U - M 6

SERVICE UNDERGROUND
NON-GUTTER SERVICE
6-DISCONNECTS MAXIMUM