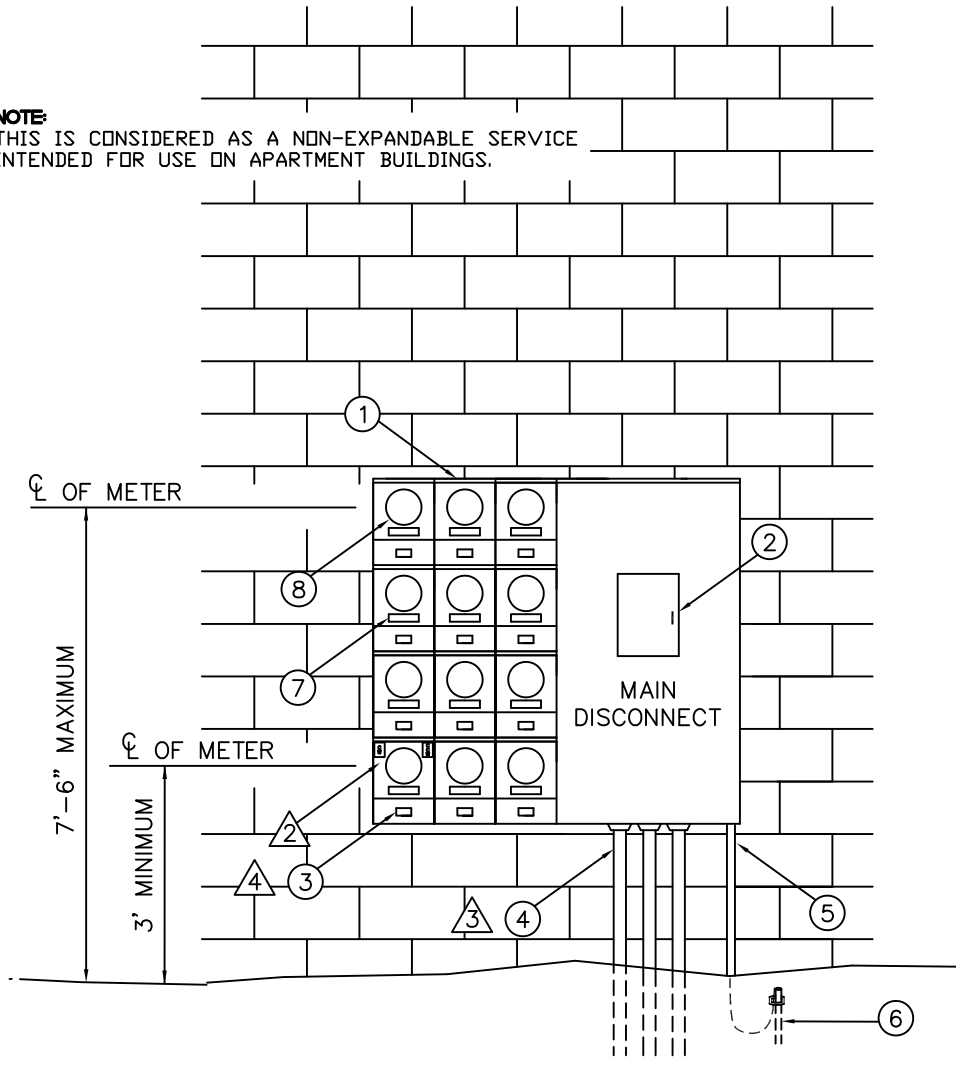


APPLICATION GUIDE				
DESCRIPTION	VOLTAGE			
	CH/UG 1 ϕ 120/240 V	CH/UG 1 ϕ 120/208 V	CH/UG 1 ϕ /3 ϕ 120/208 V	OH 1 ϕ /3 ϕ 120/240 V
COMMERCIAL	X	X	X	X
STRIP CENTER	X	X	X	X
APARTMENT	X	X		

5

NOTE:
THIS IS CONSIDERED AS A NON-EXPANDABLE SERVICE
INTENDED FOR USE ON APARTMENT BUILDINGS.



△	GENERAL NOTES	ELECTRIC SERVICE STANDARD CITY UTILITIES OF SPRINGFIELD MO.		
	SEE PAGE 2 FOR NOTES	DRAWN BY: G.GUEVARA	SERVICE UNDERGROUND METER STACK SERVICE WITH MAIN DISCONNECT 7-24 METERS	
		REV BY: W.BROOKS		
		FILE: SU-MSM1		
		APPROVED: 08/19/02	REVISED: 08/19/02	SHEET OF 1 OF 2
				STD. NO. SU-MSM

MATERIAL LIST

QTY.	DESCRIPTION	STOCK NO.	QTY.	DESCRIPTION	STOCK NO.
	FURNISHED and INSTALLED BY CUSTOMER			FURNISHED BY CITY UTILITIES	
1. AS REQD	METER STACK (RAINTIGHT, SEALABLE) 7 TO 24 METER BASES - \triangle		8. AS REQD	4 TERMINAL METER FOR 1 ϕ 120/240 V	
	4 TERMINAL SOCKET FOR 1 ϕ 120/240 V			5 TERMINAL METER FOR 1 ϕ 120/208 V	
	5 TERMINAL SOCKET FOR 1 ϕ 120/208 V			7 TERMINAL METER FOR 1 ϕ /3 ϕ 120/240 V	
	7 TERMINAL SOCKET FOR 1 ϕ /3 ϕ 120/240 V			7 TERMINAL METER FOR 1 ϕ /3 ϕ 120/208 V	
	7 TERMINAL SOCKET FOR 1 ϕ /3 ϕ 120/208 V				
2. 1	MAIN SERVICE DISCONNECT (RAINTIGHT) - \triangle				
3. 1 PER METER	MAIN BREAKER (ONE FOR EACH METER) - \triangle \triangle				
4. AS REQD	SERVICE LATERAL CONDUIT(S) AND CONDUCTORS - \triangle				
5. AS REQD	GROUNDING ELECTRODE CONDUCTOR - \triangle				
6. AS REQD	GROUNDING ELECTRODE - \triangle				
7. 1 PER METER	SERVICE ADDRESS TAG (PERMANENTLY ATTACHED MINIMUM 3/8" LETTER HEIGHT)				



GENERAL NOTES

- CUSTOMER TO VERIFY SIZE AND LOCATION OF ALL SERVICE EQUIPMENT WITH CITY UTILITIES AND APPROPRIATE INSPECTION AUTHORITY BEFORE BEGINNING WORK.
- FOR 3 ϕ SERVICE CHECK AND TAG SERVICE TO INDICATE CLOCKWISE (CW) OR COUNTER CLOCKWISE (CCW) ROTATION AT EACH METER.
- WHEN SERVICE ENTRANCE CONDUCTORS ARE INSTALLED AS PARALLEL RUNS, ALL CONNECTIONS SHALL BE IN ACCORDANCE WITH 2017 NEC ARTICLE 310.4.
- FOR COMMERCIAL AND STRIP CENTER INSTALLATIONS, 200 AMP IS THE MINIMUM RECOMMENDED SIZE FOR INDIVIDUAL SERVICE DISCONNECTS.
- SEE SU-GN3 FOR PANEL CONNECTION DETAIL WHEN INSTALLING A 120/240 VOLT 4-WIRE COMBINATION SERVICE.
- CHECK WITH LOCAL INSPECTION AUTHORITY TO VERIFY REQUIREMENTS FOR GROUNDING ELECTRODE CONDUCTOR SIZE AND TYPE OF GROUNDING ELECTRODE TO BE USED. ALL GROUNDING TO MEET 2017 NEC ARTICLE 250.

**ELECTRIC SERVICE STANDARD
CITY UTILITIES OF SPRINGFIELD MO.**

DRAWN BY:
G.GUEVARA

REV BY:
K.DENTON

FILE:
SU-MSM2

APPROVED:
10/29/14

REVISED:
03/30/18

SHEET
OF
2 2

STD. NO.
SU-MSM

SERVICE UNDERGROUND
METER STACK SERVICE
WITH MAIN DISCONNECT
7-24 METERS