



TREES • TREES • TREES

Trees are beautiful, peaceful, calming and an asset to any community. They also can be hazardous when contacting power lines.

When trees grow into overhead electrical lines, your electric service may be interrupted. Planting trees in the right place makes our job easier to maintain a minimum 10-foot separation between tree growth and electric lines. This reduces the chance of electric service disruption and safety hazards.

Our Tree Management staff is available to answer your questions and help you make the right choice when planting your next tree.

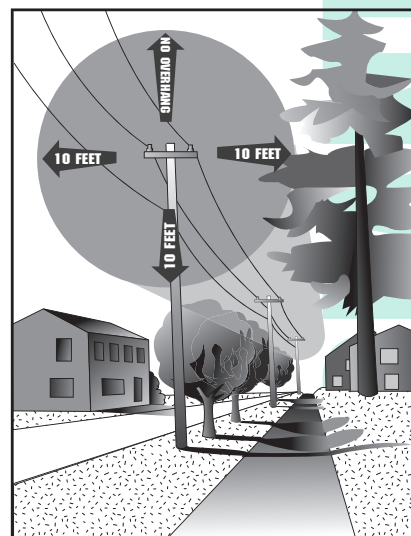
Please call 863-9000 during normal business hours to talk to a tree professional.



A service wire is the overhead wire that extends from a pole to your house. Keeping tree limbs away from this service wire is your responsibility as a homeowner.



In cases where major trimming on a service wire is needed, you may want to consider hiring a professional. If you are a do-it-yourselfer, CU will gladly disconnect the service wire and reconnect when you have completed your trimming. There is no charge for this service and we are available seven days a week. Please call 863-9000 a minimum of two days before you trim to allow for scheduling.



TREE CLEAN-UP • HOMEOWNER • SAFETY • POWERLINES





CU trims trees from electric wires on a regular schedule. When performing routine maintenance trimming in your area, we will inspect your service wire and trim if necessary. Our staff will remove trimmed branches and wood from your yard, or at your request, leave the wood for you.

If storms cause your service wire to fall down or break, we will do what is necessary to restore your power quickly at no additional cost. During these emergency situations, we leave the tree cleanup for you to allow our staff more time to restore your neighbor's power.

CITY • POWERLINES CLEAN-UP



We know how important trees are to you, so let's work together to keep Springfield beautiful!

SHADE TREES



CITY UTILITIES TREE MANAGEMENT GUIDE

